

 elements europe





HOTELS

Case Studies

## CASE STUDIES

# hotels



Suitable Products for the Hotel Industry:



Room Module



Solopod (Bathroom Pod)



Light Steel Frame Façade



Light Steel Frame Structure

Elements Europe's building systems are highly adaptable and enable us to use a variety of different materials and finishes allowing us to meet both the visual and technical requirements often expected by our clients.

Elements Europe has experience in delivering hotel developments for numerous leading hotel brands, with the ability to act as a specialist subcontractor or offer the client a full turnkey solution.

1

## University of Nottingham, Orchard Hotel

- ◆ **SIZE:** 202 Bathroom Pods
- ◆ **CLIENT:** University of Nottingham
- ◆ **ARCHITECT:** RHWL Architects



Orchard Hotel

Elements Europe worked in collaboration with the main contractor BAM to manufacture and install 202 Bathroom Pods to a hotel development on Nottingham University's campus.

The development comprised a mixture of Bathroom Pod specifications, some contained shower units, others with baths and showers and some were accessible Pods.

The Bathroom Pods were all installed horizontally off a platform and into a concrete frame.

All of the Bathroom Pods were manufactured floorless, a wet floor shower area with a linear

tap into the bathroom was requested by the main contractor.







Motel One, Edinburgh

2

## Motel One, Edinburgh

- ◆ SIZE: 129 Bathroom Pods
- ◆ CLIENT: Motel One
- ◆ ARCHITECT: CDA



Working with the main contractor, Ogilvie Construction, 129 Bathroom Pods were manufactured and installed for a new Motel One Hotel, in Edinburgh's city centre.

The site's heritage and prominent position on Princes St in Edinburgh meant the existing facade had to be retained, resulting in the building's footprint and internal room dimensions being fixed.

During the design stages Elements Europe recognised its standard 70mm cold formed Bathroom Pod walls would be too thick to provide the required bathroom dimensions. Therefore a hot rolled 40mm section was especially fabricated to reduce wall thickness.







Snoozebox, Silverstone

3

## Snoozebox, Silverstone

- ◆ SIZE: 40 Rooms
- ◆ CLIENT: Snoozebox
- ◆ ARCHITECT: The Manser Practise



Snoozebox is a fully transportable hotel concept. Once at its destination the hotel can be fully operational within just 48 hours.

This project was the first ever for Snoozebox. The 40 bed hotel was located in the grounds of Silverstone, providing guests with affordable accommodation in a prime location.

One main mothership controlled the mechanical and electrical systems for the hotel as well as its waste disposal system, the mothership is also fully transportable.

All rooms were fitted out with en-suite bathrooms, double beds as well as single beds, and flat screen

TV's to resemble a hotel room. All of the bedrooms were designed to resemble cabins on board a ship.

Elements Europe signed a 5 year global contract with Snoozebox, thus ensuring complete manufacturing exclusivity.







Ocean Hotel, Bognor Regis

4

## Ocean Hotel, Bognor Regis

- ◆ SIZE: 200 Bathroom Pods
- ◆ CLIENT: Bourne Leisure Ltd
- ◆ ARCHITECT: PWP Architects



Elements Europe, working in collaboration with Kier delivered the first luxury Butlins Hotel in Bognor Regis, for Bourne Leisure Ltd.

The project saw Elements Europe manufacture and install 200 Bathroom Pods for the hotel, which is the biggest in the city. All of the Bathroom Pods were uniquely designed according to the specific requirements of the client.

The utilisation of off-site construction methods played a major part in enabling Bourne to bring forward the opening of the hotel by two weeks.







Travelodge, Hemel Hempstead

5

## Travelodge, Hemel Hempstead

- ◆ SIZE: 131 Room Modules
- ◆ CLIENT: Travelodge
- ◆ ARCHITECT: DLA Architects



Elements Europe working in collaboration with Kier successfully manufactured and installed a 131 bedroom hotel for the Travelodge budget brand in Hemel Hempstead, located on the busy A414 link road.

The project successfully delivered a total of 131 Room Modules, including 108 en-suite hotel bedrooms as well as plant and cleaning rooms.

Corridor cassettes and stair cores were also supplied by Elements Europe.

All of the Room Modules were designed to meet the stringent design requirements of the Travelodge brand and were manufactured to a high acoustic rating due to its location on the main link road to the M1.

At the main contractor's request installation was completed using mast climbers as opposed to scaffolding, this improved delivery timescales and reduced costs. Elements Europe also sourced and managed the off-site pre-cast lift shaft for the scheme.

This was Kier's first ever fully modular development.





Bloc Hotel, Birmingham

6

## Bloc Hotel, Birmingham

- ◆ **SIZE:** 73 Room Modules
- ◆ **CLIENT:** Bloc Hotel
- ◆ **ARCHITECT:** J-Ross Developments Ltd



Elements Europe, working in collaboration with its parent company Pickstock Construction, delivered a 73 bedroom hotel as a turnkey solution for a budget boutique hotel brand, Bloc Hotel.

In addition to the 73 standard hotel Room Modules, Elements Europe also provided three linen rooms, a cleaning room as well as floor, ceiling and corridor cassettes, all of which seamlessly integrated with the traditional construction methods being applied on-site by the main contractor.

All bedrooms featured flat screen televisions, king size beds, wet shower rooms as well as bespoke ambient Italian lighting as specified by Bloc Hotel.

From starting on-site through to completion the programme was just 24 weeks. Elements Europe installed all bedrooms, stair cores and associated structures in just 10 working days.







Renaissance Marriott Hotel

7

## Renaissance Marriott Hotel, St Pancras, London

- ◆ SIZE: 189 Bathroom Pods
- ◆ CLIENT: St Pancras Chambers Investment
- ◆ ARCHITECT: RHWL



Elements Europe worked in collaboration with Galliford Try to deliver a 244 bedroom hotel for the client St Pancras Chambers Investment, part of The Manhattan Loft Corporation.

Elements Europe successfully manufactured and installed 189 Bathroom Pods using their Solopod system for the much anticipated 5 star Renaissance Marriott Hotel.

The Grade I listed chambers built between 1868 and 1876 originally featured 500-600 rooms, this was narrowed down to 244 rooms and completely transformed into a modern 5 star Marriott Hotel

whilst restoring the building's interior to its former Victorian glory.

All rooms were designed to a very high specification according to the requirements of the client.







Motel One, Manchester

8

## Motel One, Manchester

- ◆ SIZE: 279 Bathroom Pods
- ◆ CLIENT: Motel One
- ◆ ARCHITECT: Leach Rhodes Walker



Elements Europe was awarded a contract by Russell Construction to manufacture Bathroom Pods for Motel One in Manchester.

Elements Europe manufactured 279 Bathroom Pods for the Hotel, comprising of 261 en-suite Bathroom Pods with showers and 18 accessible Pods designed to full accessible standards.

Motel One is known for its high end interior design, Elements Europe manufactured the Bathroom Pods to the stringent requirements set out by the brand.







Apart-Hotel, Hammersmith

9

## Apart-Hotel, Hammersmith

- ◆ SIZE: 89 Room Modules
- ◆ CLIENT: Ace Zone Holdings Ltd
- ◆ ARCHITECT: Osel Architects



Elements Europe will deliver a full turnkey solution to manufacture and construct an 89 room apart-hotel.

The 6 storey apart-hotel has been designed according to the client's specification and will feature 89 hotel style bedrooms.

Elements Europe will be acting as the main contractor and off-site manufacturer for the scheme.

Works on-site will see Elements Europe excavate and construct a basement which will include new piling, and the laying of a raft foundation whilst at the same time progressing with the off-site construction of modular rooms.







Wokefield Park, Reading

10

## Wokefield Park, Reading

- ◆ SIZE: 95 Room Modules
- ◆ CLIENT: Principal Hayley
- ◆ ARCHITECT: Synergy Architects



Elements Europe has delivered for leading conference and events company Principal Hayley at De Vere's historic Wokefield Park Hotel in Reading.

In 2015, part of the hotel was devastated by a fire which saw the hotel lose 100 rooms. Elements Europe worked with Wates Construction, to deliver a new 95 bedroom section of hotel to replace what was lost in the fire.

Elements Europe manufactured 95 Room Modules as well as all corridor cassettes, plant, linen, cleaning and IT room, bringing the total number of modules to 117. All modules were installed to the main contractor's schedule of works.

The building is three storeys high and features a mansard roof, something Elements Europe are used to manufacturing for, having done so on a number of projects.

Elements Europe's procurement team worked closely with the hotel to ensure that the interior is to the hotels exacting standards and is an exact reflection of the aesthetics of their brand. Two types of Room Modules were manufactured, a standard and large room.





Motel One, Glasgow

11

## Motel One, Glasgow

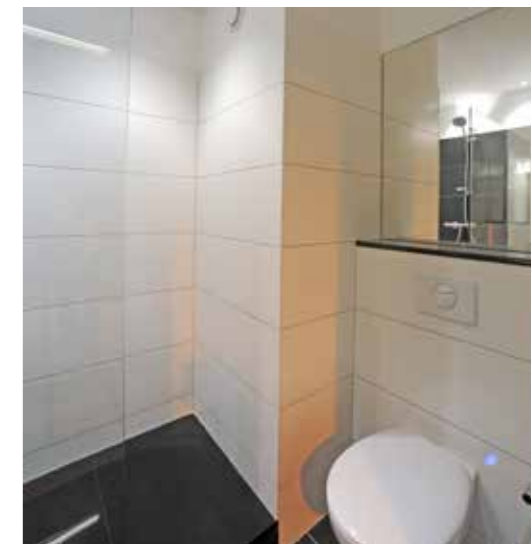
- ◆ SIZE: 374 Bathroom Pods
- ◆ CLIENT: Motel One
- ◆ ARCHITECT: Leach Rhodes Walker



Working with the main contractor, Ogilvie Construction, 374 Bathroom Pods will be manufactured and installed for a new Motel One Hotel, in Glasgow's city centre which is set to be the largest in Scotland.

Bathroom Pods are aesthetically pleasing with walk in shower with black shower tray and counter top sinks.

Elements Europe will also manufacture 24 disabled access Bathroom Pods.





Motel One, St Peter's Square Manchester

12

## Motel One, Manchester

- ◆ SIZE: 374 Bathroom Pods
- ◆ CLIENT: Russell Construction
- ◆ ARCHITECT: Leach Rhodes Walker



Elements Europe has won a contract with Russell Construction to supply bathroom pods to a brand new Motel One hotel in St Peter's Square in Manchester.

Elements Europe will manufacture 288 bathroom pods of two different types to this unique scheme, a first for the city of Manchester. The building will be two hotels in one 20 storey tower. Motel One will occupy the first eight floors of the building, with Staycity Aparthotels taking up the remaining floors above.

The hotel replaces the 1970's derelict Peterloo House, marking the last phase of St Peter's Square's regeneration.

This is the second time Elements Europe has worked

with Russell Construction to supply bathroom pods to a Motel One development in Manchester.







Staycity, St Peter's Square Manchester

13

## Staycity, Manchester

- ◆ SIZE: 256 Bathroom Pods
- ◆ CLIENT: Russell Construction
- ◆ ARCHITECT: Leach Rhodes Walker



Elements Europe has been contracted by Russell Construction to deliver bathroom pods for a new Staycity Aparthotel in Manchester's city centre.

Elements Europe will manufacture 256 bathroom pods for the scheme which is located on top of a brand new Motel One hotel in St Peter's Square. Elements Europe is already manufacturing 288 bathroom pods for the Motel One hotel working with client and main contractor Russell Construction. Staycity will occupy floors nine to 20 whilst Motel One will reside below taking floors one to eight.

Bathroom pods will be fully tiled and feature Duravit sanitary ware and Hansgrohe brassware. Each will feature a shower and have quartz vanity tops. Every pod will be manufactured floorless as requested by

the client and a number of accessible pods will also be manufactured.

This will be the fourth project Russell Construction has contracted Elements Europe to deliver in Manchester.

This development will replace the 1970's derelict Peterloo House, marking the last phase of St Peter's Square's regeneration.



Premier Inn

14

## Premier Inn, Oswestry

- ◆ SIZE: 59 Room Modules
- ◆ CLIENT: Premier Inn
- ◆ ARCHITECT: J-Ross Developments Ltd



Premier Inn Oswestry was Elements Europe's first ever project, working in collaboration with parent company Pickstock Construction to offer a full turnkey solution.

It took just 5.5 days from the first Room Module being positioned on the foundations to the roof being installed. It was at this point The Pickstock Group realised off-site building systems were the future.

Since this first scheme, Elements Europe has gone on to manufacture for a series of new Premier Inn hotels across the country.





15

# Premier Inn, Waterloo

- ◆ SIZE: 196 Bathroom Pods
- ◆ CLIENT: Premier Inn
- ◆ ARCHITECT: Dexter Moren

Working alongside John Sisk to manufacture and install 196 Bathroom Pods into an irregular shaped, former hospital building.

The site on which the project was completed posed logistical challenges due to its central London location. All deliveries were undertaken out of hours on weekends to assist the main contractor's programme.



17

# Premier Inn, Coventry

- ◆ SIZE: 59 Bathroom Pods & 42 Room Modules
- ◆ CLIENT: Premier Inn
- ◆ ARCHITECT: The Space Studio

Working in collaboration with main contractor Leadbitter, 59 Bathroom Pods and 42 Room Modules were manufactured and installed. The roof structure and plant rooms were also supplied by Elements Europe which were incorporated as part of the structure using Elements Europe's LSF Façade system.



16

# Premier Inn, Exeter

- ◆ SIZE: 120 Room Modules
- ◆ CLIENT: Trathen Properties
- ◆ ARCHITECT: GJR Architecture

Working alongside Elements Europe's parent company Pickstock Construction, a turnkey solution was provided to client Trathen Properties. 120 Room Modules were manufactured to the specification of Premier Inns' ID3++ Dark standards. Elements Europe also supplied linen rooms, stair cores, corridor cassettes and a flat roof structure.



18

# Premier Inn, Ealing

- ◆ SIZE: 165 Room Modules
- ◆ CLIENT: Premier Inn
- ◆ ARCHITECT: MAA Architects

Working with main contractor Mace, 165 Room Modules, as well as linen rooms, stair cores, plus corridor and roof cassettes were manufactured and installed into the nine storey building.





19

# Premier Inn, Croydon

- ◆ SIZE: 168 Bathroom Pods
- ◆ CLIENT: Premier Inn
- ◆ ARCHITECT: Axiom Architects

Working in collaboration with Bowmer and Kirkland, 168 Bathroom Pods were manufactured and installed.



21

# Premier Inn, Ipswich

- ◆ SIZE: 85 Bathroom Pods
- ◆ CLIENT: Premier Inn
- ◆ ARCHITECT: Urban Reef

Working with main contractor ISG Jackson, 85 Bathroom Pods were manufactured and installed.



20

# Premier Inn, Wandsworth

- ◆ SIZE: 120 Bathroom Pods
- ◆ CLIENT: Premier Inn
- ◆ ARCHITECT: Carey Jones

Working in collaboration with main contractor Bowmer and Kirkland, 120 Bathroom Pods were manufactured to ID3++ Dark standard. The hotel is a further extension to an existing Sainsbury's superstore.



22

# Premier Inn, Dorchester

- ◆ SIZE: 65 Bathroom Pods
- ◆ CLIENT: Premier Inn
- ◆ ARCHITECT: Boon Brown

Working in collaboration with Leadbitter, 65 Bathroom Pods were manufactured and installed.







Premier Inn, Waterloo

24

## Premier Inn, Hendon

- ◆ SIZE: 90 Bathroom Pods
- ◆ CLIENT: Premier Inn
- ◆ ARCHITECT: Axiom Architects

Working with JJ Rhatigan, 90 Bathroom Pods were manufactured in line with Premier Inns' ID3++ Dark bathroom design and installed into the former office building.

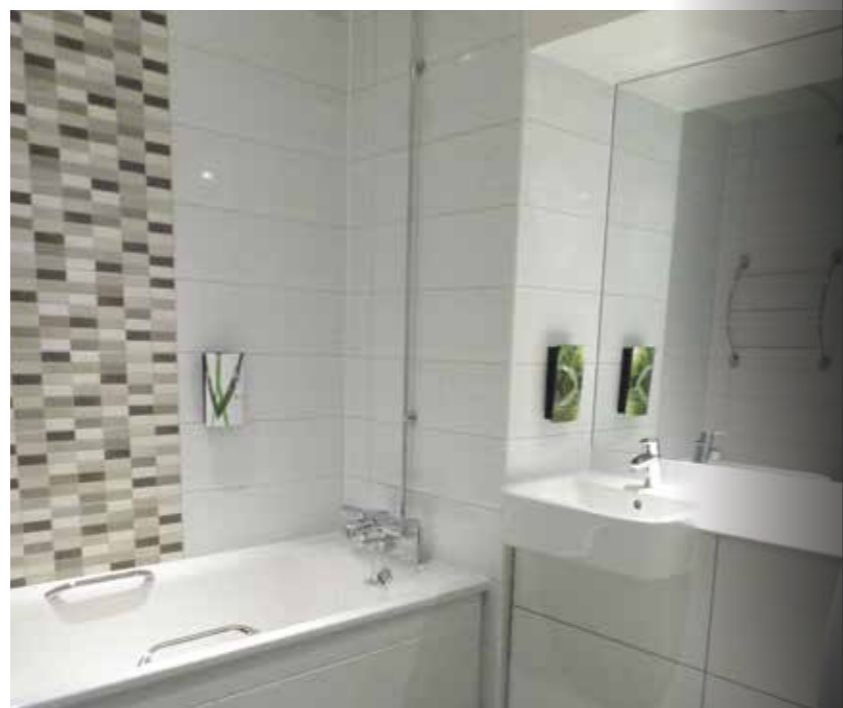


23

## Premier Inn, South Bromley

- ◆ SIZE: 131 Bathroom Pods
- ◆ CLIENT: Premier Inn
- ◆ ARCHITECT: Studio Egret West

Working in collaboration with main contractor McLaren Construction 131 Bathroom Pods were manufactured and installed to Premier Inn's ID4 specification.



25

## Premier Inn, Yeovil

- ◆ SIZE: 80 Bathroom Pods
- ◆ CLIENT: Premier Inn
- ◆ ARCHITECT: Axiom Architects

Working in collaboration with main contractor Bowmer and Kirkland, 80 Bathroom Pods were manufactured and installed to Premier Inn's ID4 specification.



26

## Premier Inn, Leeds

- ◆ SIZE: 136 Bathroom Pods
- ◆ CLIENT: Premier Inn
- ◆ ARCHITECT: Cartwright Pickard

Working with GMI Construction, 136 Bathroom Pods were manufactured in line with Premier Inns' ID4 design and installed into the brand new building.



28

## Premier Inn, Woolwich

- ◆ SIZE: 120 Room Modules
- ◆ CLIENT: Berkeley Homes
- ◆ ARCHITECT: EPR

Elements Europe will manufacture, deliver and install 120 Room Modules for Berkeley Homes' Royal Arsenal Riverside project.

Modules will be manufactured to Premier Inn's ID4 specification. Stair cores, linen rooms and flat roof cassettes will also be manufactured for the scheme.



27

## Premier Inn, Slough

- ◆ SIZE: 131 Bathroom Pods
- ◆ CLIENT: Premier Inn
- ◆ ARCHITECT: Axiom Architects

Working in collaboration with main contractor Bowmer Kirkland, Elements Europe manufactured, delivered and installed 131 Bathroom Pods to Premier Inn's ID4 specification.



29

## Premier Inn, Botley

- ◆ SIZE: 123 Bathroom Pods
- ◆ CLIENT: SDC
- ◆ ARCHITECT: Mountford Pigott

123 bathroom pods will be manufactured, 16 of which will be DDA compliant.

The six storey hotel will be part of the multi million pound mixed use development on the edge of Oxford city. The hotel will make up part of the plan to reinvigorate the local centre's character and surrounding area.





# Contact Us

---



MANUFACTURED  
IN THE UK

ELEMENTS EUROPE

HEAD OFFICE

Queensway  
Apley, Telford  
TF1 6DA

t. +44 (0) 1952 767 100

ELEMENTS EUROPE

LONDON OFFICE

155 Gray's Inn Road  
London  
WC1X 8UE

t. +44 (0) 207 8314835

e. [info@elements-europe.com](mailto:info@elements-europe.com)

[www.elements-europe.com](http://www.elements-europe.com)   



The mark of  
responsible forestry



DESIGN, DEVELOPMENT AND DELIVERY OF  
OFF-SITE CONSTRUCTION SOLUTIONS